

About Company

**NIPPON STEEL METAL PRODUCTS
VIETNAM CO., LTD.**

Công ty TNHH Nippon Steel Metal Products Vietnam (NSMV) được thành lập ngày 23/10/2012 và chính thức đi vào hoạt động vào tháng 12/2012.

Là liên doanh được thành lập bởi các công ty hàng đầu Nhật Bản trong lĩnh vực sản xuất thép, gồm: Nippon Steel Metal Products Co., Ltd, Sumitomo Corporation, Kyohei Steel LTD, mục tiêu của NSMV là cung cấp cho thị trường các sản phẩm ống thép, cốt pha thép có chất lượng cao tương đương sản phẩm tại thị trường Nhật Bản và có giá thành phù hợp với thị trường Việt Nam, góp phần thúc đẩy quá trình công nghiệp hóa, hiện đại hóa đất nước

Nippon Steel Metal Products Vietnam Co., Ltd (NSMV) is established on October 23, 2012 and officially started business from December 2016.

Being joint venture between top leading companies of manufacturing and trading steel products in Japan, including Nippon Steel Metal Products Co., Ltd., Sumitomo Corporation, Kyohei Steel LTD, NSMV aims to supply steel pipe, steel formwork with quality equivalent to products from Japan and proper price in Vietnam's market

Giới thiệu Công ty / Company Introduction

Tên công ty <i>Company name</i>	CÔNG TY TNHH NIPPON STEEL METAL PRODUCTS VIETNAM
Ngày thành lập <i>Established date</i>	23/10/2012
Đăng ký kinh doanh số <i>Enterprise registration code</i>	2300758158
Địa chỉ <i>Address</i>	Km7, Quốc lộ 18, KCN Quế Võ, xã Phương Liễu, huyện Quế Võ, tỉnh Bắc Ninh, Việt Nam <i>Km7, Highway 18, Que Vo Industrial Zone, Phuong Lieu commune, Que Vo district, Bac Ninh province, Vietnam</i>
Vốn điều lệ <i>Charter capital</i>	2.580.000 USD
Vốn đầu tư <i>Investment capital</i>	12.780.000 USD
Đại diện <i>Legal representative</i>	Mr. Takufumi Ishikawa
Các nhà đầu tư	1. Nippon Steel Metal Products Co., Ltd

Investors

2. Sumitomo Corporation

**3. Công ty Cổ phần Công nghệ Bắc Việt
*Bac Viet Technology Joint Stock Company***

**Ngành nghề kinh doanh
*Business lines***

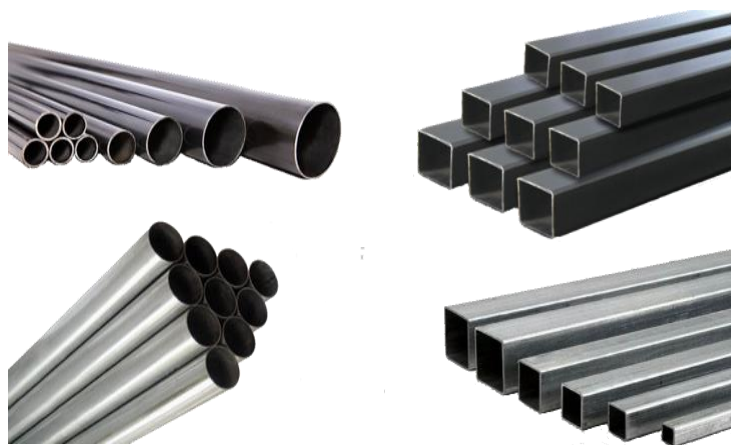
Steel LTD

■ **Trade mark**



**NIPPON STEEL METAL PRODUCTS
VIETNAM CO., LTD.**

■ **Manufacturing steel pipes**



■ **Manufacturing steel formwork, scaffold**



■ **Service of designing steel structure drawings**

Design services for drawings of structural steel products used in construction works (excluding work design).

■ **Programming, processing computer softwares**



Development history

Đổi tên công ty thành / company
name change : Nippon Steel Metal
Products Vietnam

*Received ISO 9001:2008 certificate
Received certificates of JIS G
3444; JIS G 3466; ASTM A 500*

Chứng nhận ISO 9001:2008
JIS G 3444;
JIS G 3466;
ASTM A 500

Thiết kế sản phẩm kết cấu thép
cho khách hàng tại Nhật Bản
*Design shop drawing for
Japanese customers*

2019**2016**

Sản xuất phần mềm cho các
khách hàng Nhật Bản
*Programming computer softwares
for Japanese customer*

2015**2014**

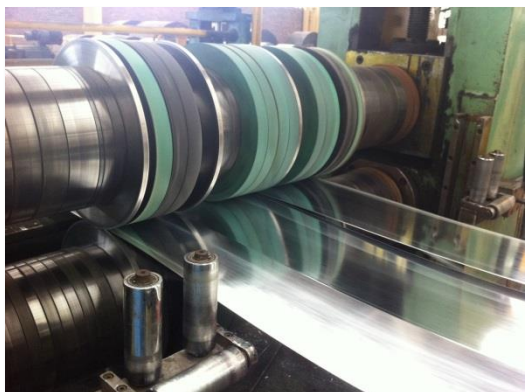
Sản xuất phẩm cốt pha thép,
giàn giáo
*Manufacturing steel
formwork, scaffold.*

2013**2012**

23/10/2012: Thành lập Công ty
Establishment date
01/12/2012: Sản xuất ống thép
*Manufacturing steel
pipe*

Capacity**Design capacity**

- **Steel pipe : 48.000 ton / year**
- **Formwork steel : 10.000 ton / year**
- **Scraffold : 1.000 ton / year**



1,600 x 4mm / 1,300 x 2mm
slitting machine,

supply of raw materials for all
kinds of steel pipe.

20-114 welding steel pipe
production line allows the
production of round steel pipes
from $\text{Ø}19.1$, box steel pipes from
13x26 with thickness from 0.7mm
to 3.5mm.



Materials imported directly from
member companies: Nippon Steel &
Sumikin Bussan, Sumitomo
Corporation, ... are one of the factors
that ensure the quality of Japanese
steel pipe products.

Capacity

Crane system with load from 5-30 tons, allows simultaneous delivery of 10 vehicles, timely meet all the needs of customers.



Laboratory with wire cutting system; testing machines for bending, drawing and compressing; welding quality control system ... allows checking, assessing product quality quickly and accurately.

Formwork production line of faceplate is a homogeneous block with high accuracy, 90° square angle, absolute flat surface, no gaps when joining.



Automatic welding robot with precision, high quality, uniform welding

■ Machinery

TT	Machinery	Origin	Year manufactured	Amount
I	Máy móc, thiết bị			
1	Steel pipe production line F20 - 114	China	2009	05
2	Slitting Machine	China	2009	02
3	Crane 30 tons	Vietnam	2010	01
4	Crane 10 tons	Vietnam	2010	01
5	Crane 5 tons	Vietnam	2010 - 2014	10
6	Pipe head dredge	China	2010	01
7	Wire cutting machine	Japan	2014	01
8	Tractors, hydraulic compressors	Japan	2014	01
9	Formwork production line	Japan	2014	01
10	Formwork welding machine	Vietnam	2015	04
11	Welding robot scaffolding	Japan	2017	02
12	30 ton crane truck	Japan	2012	01
13	Factory area of 12.684 m ²	Vietnam	2010	01
II	Office, equipment			
1	Office building and ancillary works (8.157 m ²)	Vietnam	2009	01

■ Staffs

With 150 employees, highly qualified, experienced, under the management of Japanese experts. The key employees are sent to train, learn to improve skills in Japan. In addition, the company annually selects and sends workers to 1 year training at Nippon Steel Metal Products factory in Japan.





Annually, NSMV recruits and sends employees to work short-term (3 months) and long-term (12 months) at Nippon Steel Metal Products factory in Japan to capture and acquire technology, produce and improve skills for workers.



Steel pipe products

Steel pipes are manufactured from imported raw materials according to ASTM A500 / A500M-18, JIS G 3444: 2015, JIS G 3466: 2015 standards.

Products are strictly controlled on quality, ensuring good bearing capacity, toughness, high uniformity in durability over pipe length.

Black pipe



Hàng rào / Steel fence



Sản phẩm ống thép

BẢNG QUY CHUẨN KHỐI LƯỢNG ỐNG THÉP TRÒN
Available size ranges & weight table of round steel pipes

Đơn vị tính: kg/cây (6m)
 Unit: Kg/pc (6m)

Đường kính ngoài Outside diameter	Cây / bó Pcs/pundle	Chiều dày thành ống (mm) / Wall thickness (mm)																					
		1.00	1.10	1.20	1.40	1.50	1.60	1.70	1.80	1.90	2.00	2.10	2.20	2.30	2.40	2.50	2.60	2.70	2.80	2.90	3.00	3.20	3.50
Ø19.1	169	2.68	2.93	3.18	3.67	3.91	4.14	4.38	4.61														
Ø21.2	169	2.99	3.27	3.55	4.10	4.37	4.64	4.90	5.17	5.43	5.68												
Ø21.7	169	3.06	3.35	3.64	4.21	4.48	4.76	5.03	5.30	5.57	5.83												
Ø22.0	169	3.11	3.40	3.69	4.27	4.55	4.83	5.11	5.38	5.65	5.92												
Ø22.2	169	3.14	3.43	3.73	4.31	4.59	4.88	5.16	5.43	5.71	5.98												
Ø25.4	114	3.61	3.95	4.30	4.97	5.30	5.63	5.96	6.29	6.61	6.92	7.24	7.55	7.86									
Ø26.7	114	3.80	4.17	4.53	5.24	5.59	5.94	6.29	6.63	6.97	7.31	7.64	7.98	8.30									
Ø27.2	114	3.88	4.25	4.62	5.34	5.70	6.06	6.41	6.76	7.11	7.46	7.80	8.14	8.47									
Ø27.3	114	3.89	4.26	4.63	5.37	5.73	6.08	6.44	6.79	7.14	7.49	7.83	8.17	8.51									
Ø31.8	80	4.56	5.00	5.43	6.30	6.72	7.15	7.57	7.99	8.41	8.82	9.23	9.64	10.04	10.44	10.84							
Ø33.4	80	4.79	5.26	5.72	6.63	7.08	7.53	7.97	8.42	8.86	9.29	9.73	10.16	10.58	11.01	11.43							
Ø34.0	80	4.88	5.35	5.82	6.75	7.21	7.67	8.12	8.58	9.02	9.47	9.91	10.35	10.79	11.22	11.65							
Ø36.4	80	5.24	5.75	6.25	7.25	7.75	8.24	8.73	9.21	9.70	10.18	10.66	11.13	11.60	12.07	12.54							
Ø38.1	80	5.49	6.02	6.55	7.60	8.12	8.64	9.16	9.67	10.18	10.68	11.19	11.69	12.18	12.68	13.17							
Ø41.9	61	6.05	6.64	7.23	8.39	8.97	9.54	10.11	10.68	11.24	11.81	12.37	12.92	13.48	14.03	14.57	15.12	15.66	16.20				
Ø42.2	61	6.10	6.69	7.28	8.45	9.03	9.61	10.19	10.76	11.33	11.90	12.46	13.02	13.58	14.13	14.69	15.23	15.78	16.32	16.86	17.40	18.47	
Ø42.7	61	6.17	6.77	7.37	8.56	9.14	9.73	10.31	10.89	11.47	12.04	12.62	13.18	13.75	14.31	14.87	15.43	15.98	16.53	17.08	17.62	18.70	
Ø48.1	52	6.97	7.65	8.33	9.67	10.34	11.01	11.67	12.33	12.99	13.64	14.29	14.94	15.59	16.23	16.87	17.50	18.14	18.77	19.39	20.02	21.26	23.10
Ø48.3	52	7.00	7.68	8.36	9.72	10.39	11.06	11.72	12.38	13.04	13.70	14.36	15.01	15.65	16.30	16.94	17.58	18.22	18.85	19.48	20.11	21.35	
Ø48.6	52	7.04	7.73	8.42	9.78	10.45	11.13	11.80	12.46	13.13	13.79	14.45	15.10	15.76	16.41	17.05	17.70	18.34	18.97	19.61	20.24		
Ø50.3	52	7.29	8.01	8.72	10.13	10.83	11.53	12.22	12.92	13.61	14.29	14.98	15.66	16.33	17.01	17.68	18.35	19.02	19.68	20.34	21.00	22.30	
Ø59.9	37		9.57	10.42	12.12	12.96	13.80	14.64	15.47	16.31	17.13	17.96	18.78	19.60	20.42	21.23	22.04	22.85	23.66	24.46	25.26	26.85	29.21
Ø60.5	37		9.67	10.53	12.24	13.09	13.94	14.79	15.63	16.47	17.31	18.15	18.98	19.81	20.63	21.45	22.27	23.09	23.90	24.72	25.52	27.13	
Ø75.6	24		12.13	13.21	15.37	16.45	17.52	18.59	19.66	20.72	21.78	22.84	23.89	24.94	25.99	27.04	28.08	29.12	30.16	31.19	32.23	34.28	37.34
Ø86.3	19				18.00	19.26	20.53	21.78	23.04	24.29	25.54	26.78	28.03	29.27	30.50	31.74	32.97	34.20	35.42	36.64	37.86	40.29	43.91
Ø113.5	19								29.75	31.37	33.00	34.61	36.23	37.84	39.45	41.06	42.66	44.26	45.86	47.46	49.05	52.22	56.96

Sản phẩm ống thép

BẢNG QUY CHUẨN KHỐI LƯỢNG THÉP HỘP VUÔNG - CHỮ NHẬT
Available size ranges & weight table of square & rectangular tubes

Đơn vị tính: kg/cây (6m)
 Unit: Kg/pc (6m)

Đường kính ngoài Outside diameter	Cây / bó Pcs/pundle	Chiều dày thành ống (mm) / Wall thickness (mm)																						
		1.00	1.10	1.20	1.40	1.50	1.60	1.70	1.80	1.90	2.00	2.10	2.20	2.30	2.40	2.50	2.60	2.70	2.80	2.90	3.00	3.20	3.50	
13x26	98	3.44	3.76	4.08	4.69	5.00																		
14x14	100	2.41	2.62	2.84	3.24	3.44																		
16x16	100	2.79	3.04	3.29	3.77	4.01																		
20x20	100	3.54	3.87	4.19	4.83	5.14																		
25x25	64	4.48	4.90	5.32	6.15	6.55	6.95	7.35	7.74	8.12	8.50													
30x30	49	5.42	5.94	6.45	7.46	7.96	8.46	8.95	9.43	9.91	10.39													
20x40	50	5.42	5.94	6.45	7.46	7.96	8.46	8.95	9.43	9.91	10.39													
25x50	50	6.84	7.49	8.15	9.44	10.08	10.72	11.35	11.98	12.60	13.21	13.83	14.44	15.04										
40x40	49	7.31	8.01	8.71	10.10	10.79	11.47	12.15	12.82	13.49	14.16	14.82	15.47	16.12	16.77	17.41								
30x60	50	8.25	9.05	9.84	11.42	12.20	12.98	13.75	14.52	15.28	16.04	16.79	17.54	18.29	19.03	19.76								
50x50	25	9.19	10.09	10.97	12.74	13.62	14.49	15.35	16.21	17.07	17.92	18.77	19.62	20.46	21.29	22.12	22.95	23.77	24.58	25.39	26.21	27.80		
45x75	32		12.16	13.24	15.38	16.44	17.50	18.56	19.61	20.65	21.69	22.73	23.76	24.79	25.81	26.83	27.84	28.85	29.86	30.86	31.85			
40x80	32		12.16	13.24	15.38	16.44	17.50	18.56	19.61	20.65	21.69	22.73	23.76	24.79	25.81	26.83	27.84	28.85	29.86	30.86	31.85	33.83		
60x60	30		12.16	13.24	15.38	16.44	17.50	18.56	19.61	20.65	21.69	22.73	23.76	24.79	25.81	26.83	27.84	28.85	29.86	30.86	31.85			
75x75	16				19.33	20.68	22.02	23.36	24.69	26.02	27.34	28.66	29.98	31.29	32.59	33.89	35.19	36.48	37.77	39.05	40.33	42.87		
50x100	28				19.33	20.68	22.02	23.36	24.69	26.02	27.34	28.66	29.98	31.29	32.59	33.89	35.19	36.48	37.77	39.05	40.33	42.87		
90x90	16				23.29	24.92	26.54	28.16	29.78	31.39	33.00	34.60	36.20	37.79	39.38	40.96	42.54	44.11	45.68	47.25	48.81	51.92		
60x120	28				23.29	24.92	26.54	28.16	29.78	31.39	33.00	34.60	36.20	37.79	39.38	40.96	42.54	44.11	45.68	47.25	48.81	51.92		
100x100	16										36.76	38.55	40.34	42.12	43.90	45.67	47.44	49.20	50.96	52.71	54.46	57.94		

Formwork steel

Manufactured on synchronous lines, imported materials from reputable suppliers: Nippon Steel & Sumikin Bussan Co., Ltd, Sumitomo Corporation ..., Japanese - Vietnamese steel formwork ensure higher quality than public standards. Japanese JIS A8652.

Standard formwork

The side and the surface of flat steel formwork form a homogeneous mass, making a difference and a better quality than the discrete structure of assembled formworks.

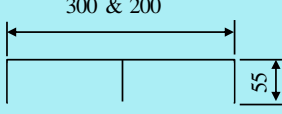
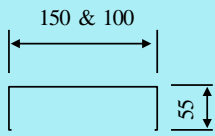


Non standard Formwork

Non-standard formwork is designed according to customer requirements, serving special architectural works: water tunnels, submersible wells, road bridges, hydroelectric dams ..., ensuring accuracy and quality. , aesthetic and cost



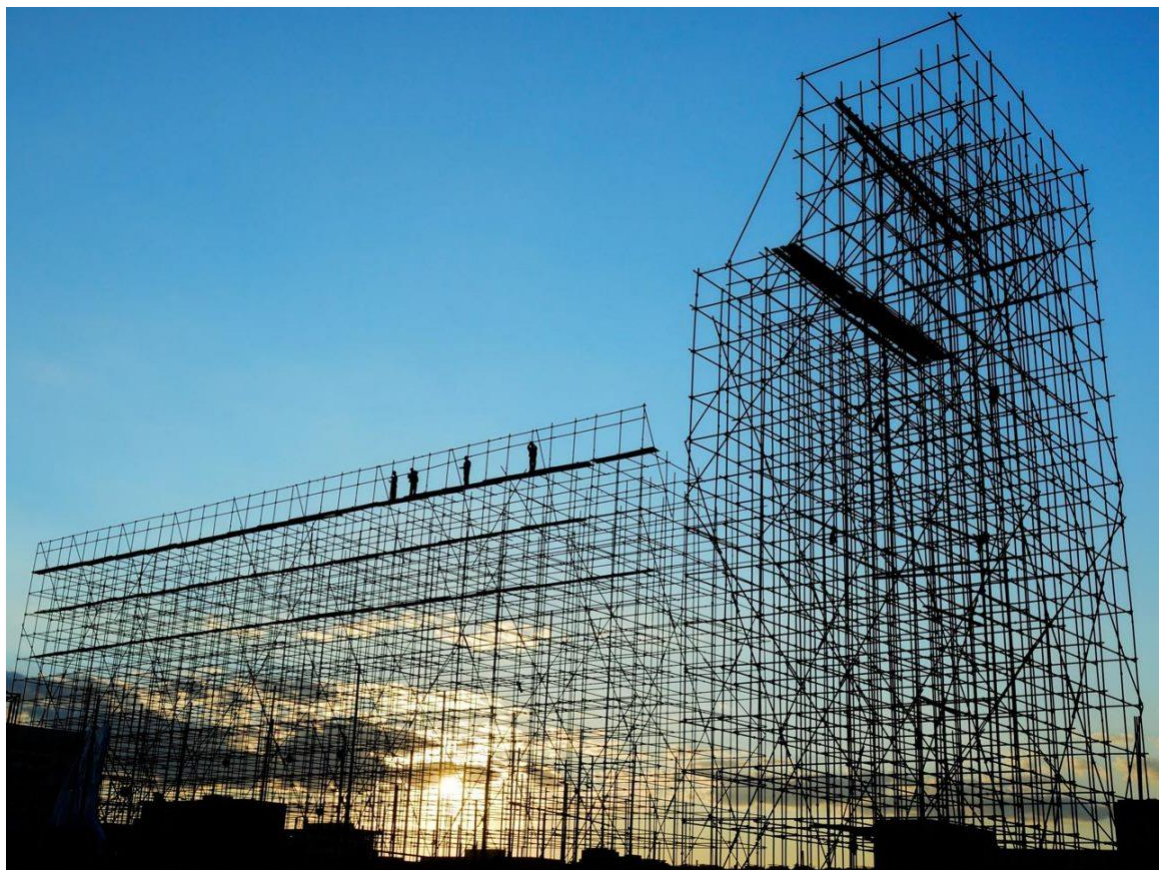
REGULATION TABLE OF STANDARD FORMWORK PRODUCTS

Hình dạng mặt cắt và quy cách 断面形状及び規格						
Phân loại mặt cắt 区分及び断面形状	Ký hiệu 記号	Hình dạng kích thước 形状・寸法 (mm)	Khối lượng 質量 (kg)	Diện tích mặt cắt ngang 断面積 (cm ²)	Moment quán tính mặt cắt I 断面二次モーメントI (cm ⁴)	Môđun chống uốn của mặt cắt Z 断面係数Z (cm ³)
Tạo hình フォーミング 	3018	300 × 1,800	17.2	10.75	27.62	6.35
	3015	300 × 1,500	14.4			
	3012	300 × 1,200	11.7			
	*3010	300 × 1,000	9.8			
	3009	300 × 900	8.9			
	*3007.5	300 × 750	7.4			
	3006	300 × 600	6.2			
	2018	200 × 1,800	13.3			
	2015	200 × 1,500	11.1			
	2012	200 × 1,200	9.0			
	*2010	200 × 1,000	7.5			
	2009	200 × 900	6.8			
	*2007.5	200 × 750	5.7			
	2006	200 × 600	4.7			
Tạo hình フォーミング 	1518	150 × 1,800	9.3	5.87	16.40	3.84
	1515	150 × 1,500	7.8			
	1512	150 × 1,200	6.3			
	*1510	150 × 1,000	5.6			
	1509	150 × 900	4.8			
	*1507.5	150 × 750	4.2			
	1506	150 × 600	3.3			
	1018	100 × 1,800	9.3			
	1015	100 × 1,500	7.8			
	1012	100 × 1,200	6.3			
	*1010	100 × 1,000	5.6			
	1009	100 × 900	4.8			
	*1007.5	100 × 750	4.2			
	1006	100 × 600	3.3			

Products Scaffolding

Scaffolding products are manufactured according to Japanese technical standards, meeting strict customer requirements for quality.

The product has been exported to Japan market and received high trust from customers.



Hệ thống quản lý chất lượng

The production process is managed in accordance with ISO 9001: 2015, certified in accordance with JIS G 3444, JIS G 3466 and ASTM A 500.



Typical projects

NSMV steel pipe has been present in many national key projects, many large-scale projects and has received high trust from customers for product quality and sales service.



Nghi Son oil refinery (Thanh Hóa)



Terminal T2 Noi Bai International Airport



Sam Sung Factory (Thai Nguyen)



Mong Duong 1 & 2 Thermal Power Plant (Quang Ninh)



Yen So Gamuda Project



Ha Tinh Formosa Project

Typical projects



**NIPPON STEEL METAL PRODUCTS
VIETNAM CO., LTD.**

Started supplying to the market from November 2014, Japan - Vietnam steel formwork has been quickly trusted and highly appreciated by customers.



Bac Me hydropower project (Ha Giang)



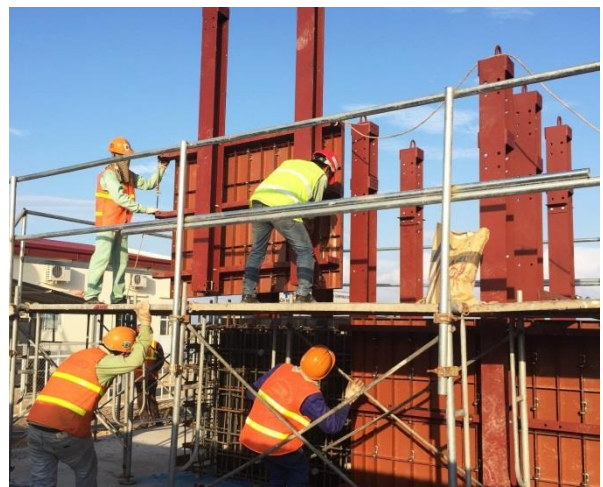
Bac Luan 2 Bridge project (Quang Ninh)



*Water treatment factory
(Hoa Lac Hi-Tech Park)*



Nam Dinh Vu wharf (Hai Phong)



Lach Huyen bridge (Hai Phong)