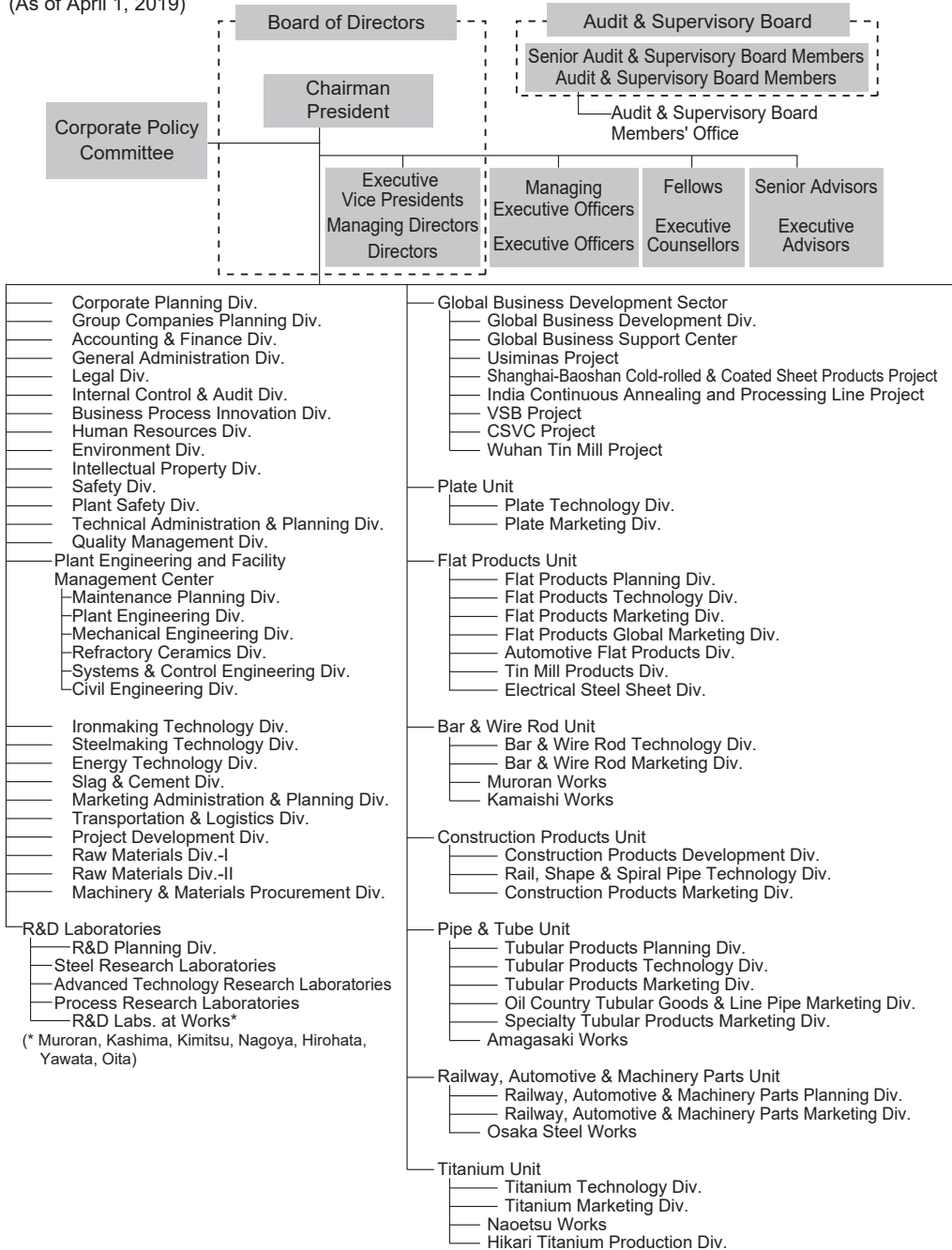


Organization

(As of April 1, 2019)



- Kashima Works
- Kimitsu Works
- Nagoya Works
- Wakayama Works
- Hirohata Works
- Yawata Works
- Oita Works

- Osaka Office
- Hokkaido Marketing Branch
- Tohoku Marketing Branch
- Niigata Marketing Branch
- Hokuriku Marketing Branch
- Ibaraki Marketing Branch
- Nagoya Marketing Branch
- Chugoku Marketing Branch
- Shikoku Marketing Branch
- Kyushu Marketing Branch

Overseas Subsidiaries and Offices

NIPPON STEEL NORTH AMERICA, INC.
(Head Office: New York, Chicago, Houston, Mexico City)

NIPPON STEEL AMÉRICA DO SUL LTDA.
(Head Office: São Paulo, Belo Horizonte)

European Office
(Düsseldorf)

NIPPON STEEL AUSTRALIA PTY. LIMITED
(Head Office: Sydney)

NIPPON STEEL CONSULTING (BEIJING) CO.,LTD.
(Head Office: Beijing, Shanghai, Guangzhou)

PT. NIPPON STEEL INDONESIA
(Head Office: Jakarta)

NIPPON STEEL VIETNAM COMPANY LIMITED
(Head Office: Ho Chi Minh City, Ha Noi)

NIPPON STEEL SOUTHEAST ASIA PTE. LTD.
(Head Office: Singapore)

NIPPON STEEL (THAILAND) CO., LTD.
(Head Office: Bangkok)

NIPPON STEEL INDIA PRIVATE LIMITED
(Head Office: New Delhi)

Dubai Office
(Dubai)